

The logo features the letters 'PI' in a large, blue, stylized font. To the right of 'PI', the words 'BayArea' and 'Plan' are stacked. 'BayArea' is in a bold, black, sans-serif font, and 'Plan' is in a blue, lowercase, sans-serif font. A vertical blue line is on the left, and a horizontal blue line is below the text.

PI BayArea Plan

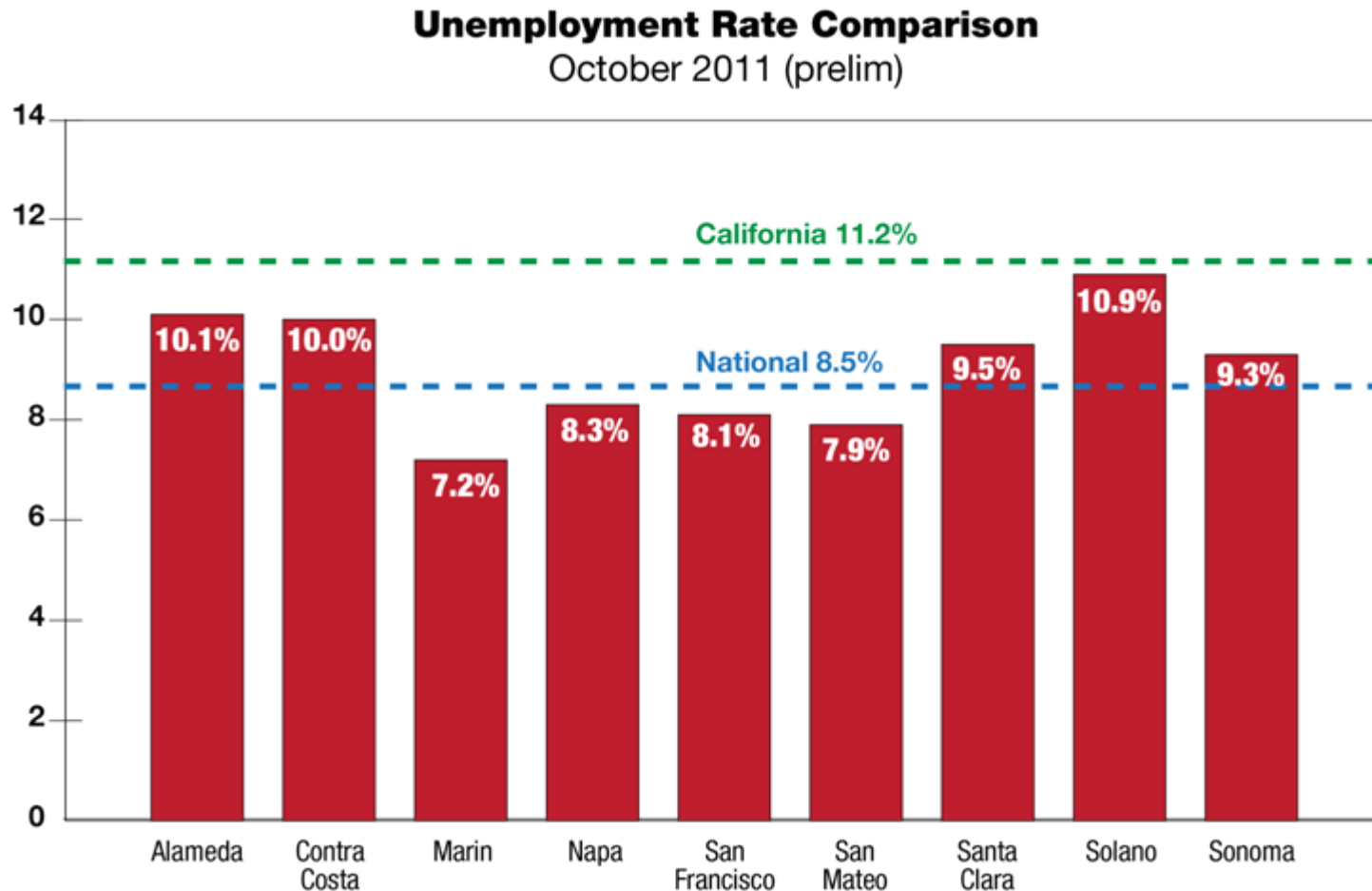
Fostering Economic Development

Steve Heminger
MTC Executive Director

December 8, 2011

Bay Area Economic Backdrop

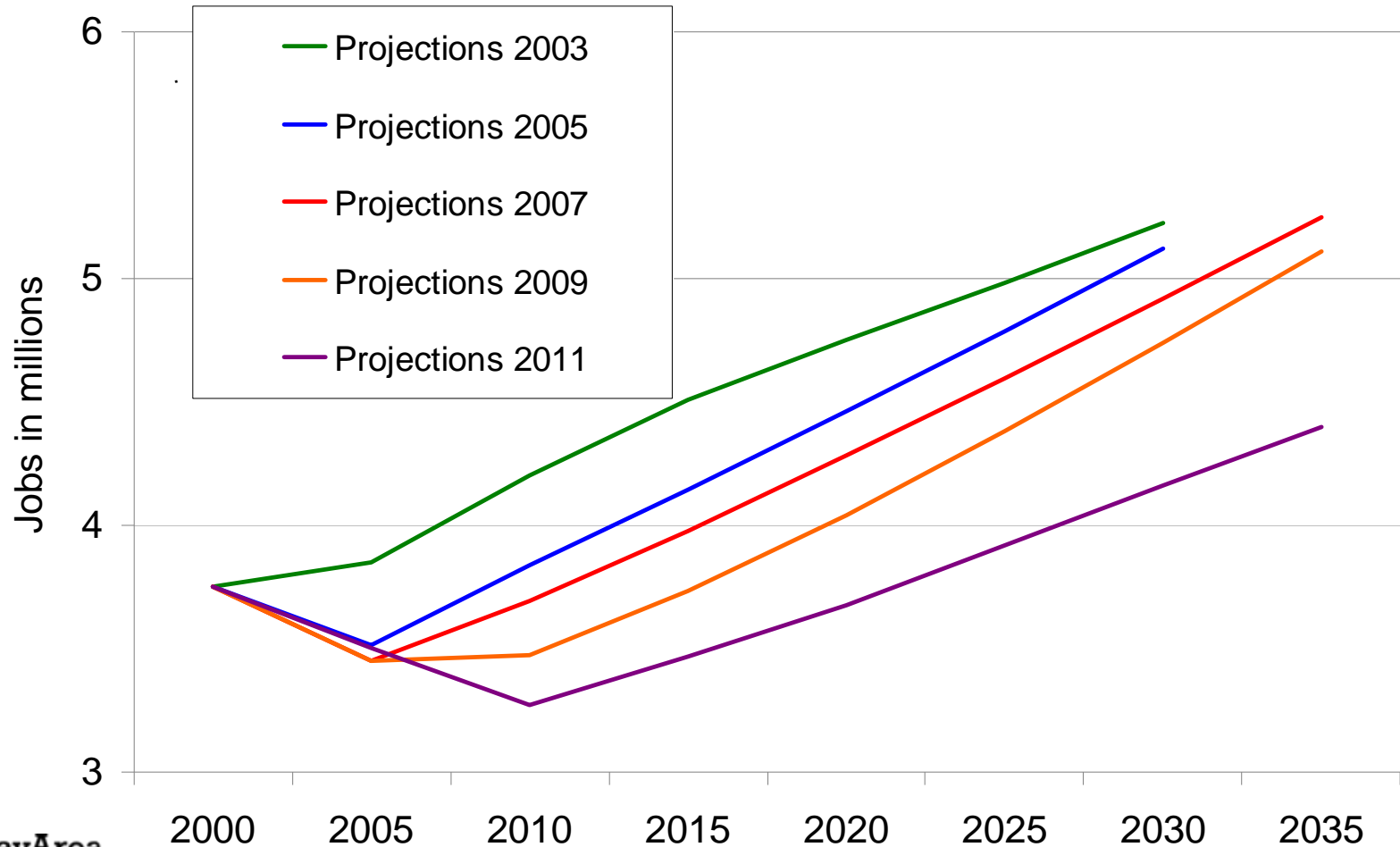
- The Bay Area labor market is experiencing a stronger recovery than most of California, but is lagging behind the rest of the nation



Note: Data not seasonally adjusted

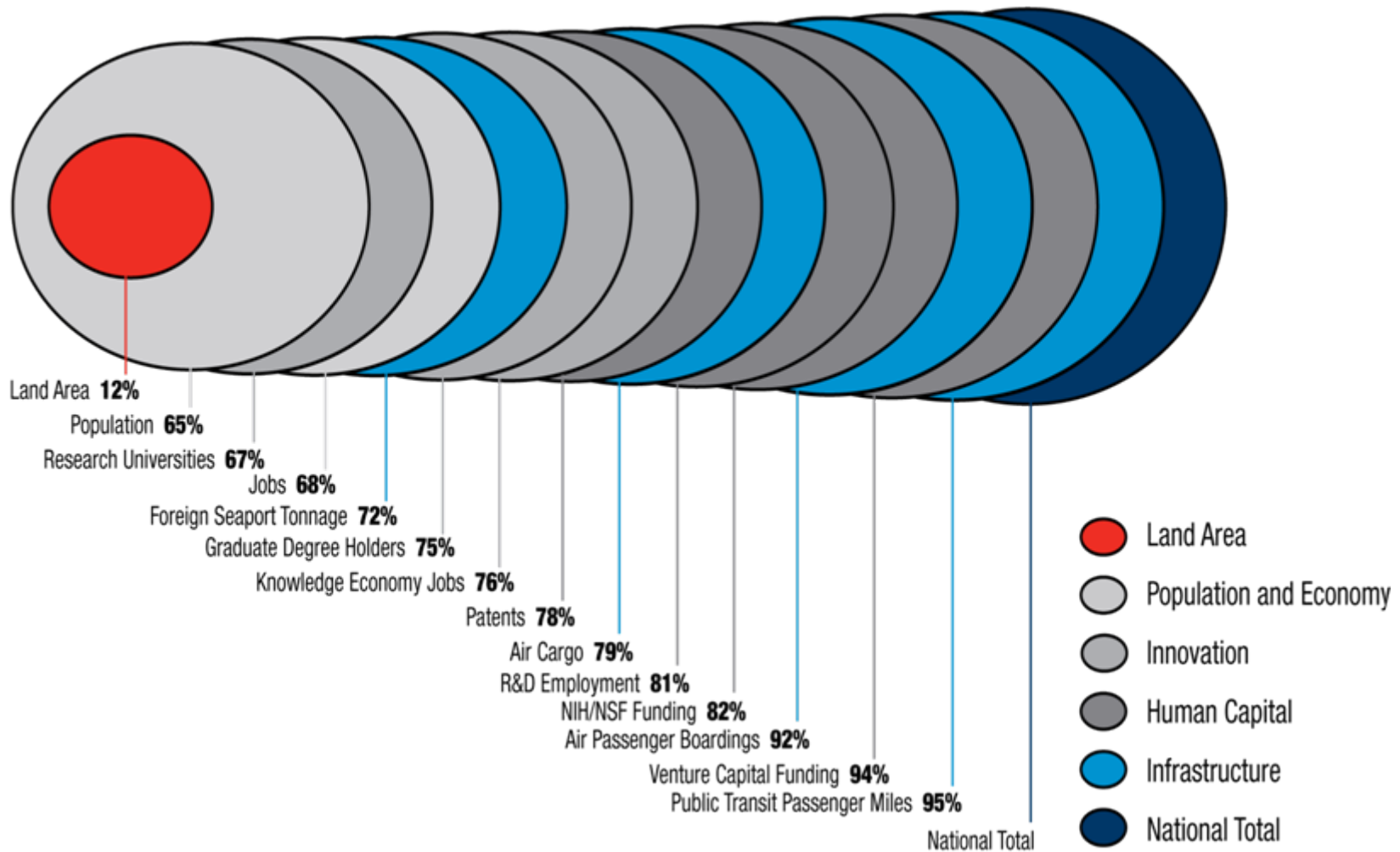
Bay Area Economic Backdrop

- **But long-term regional job projections keep falling**

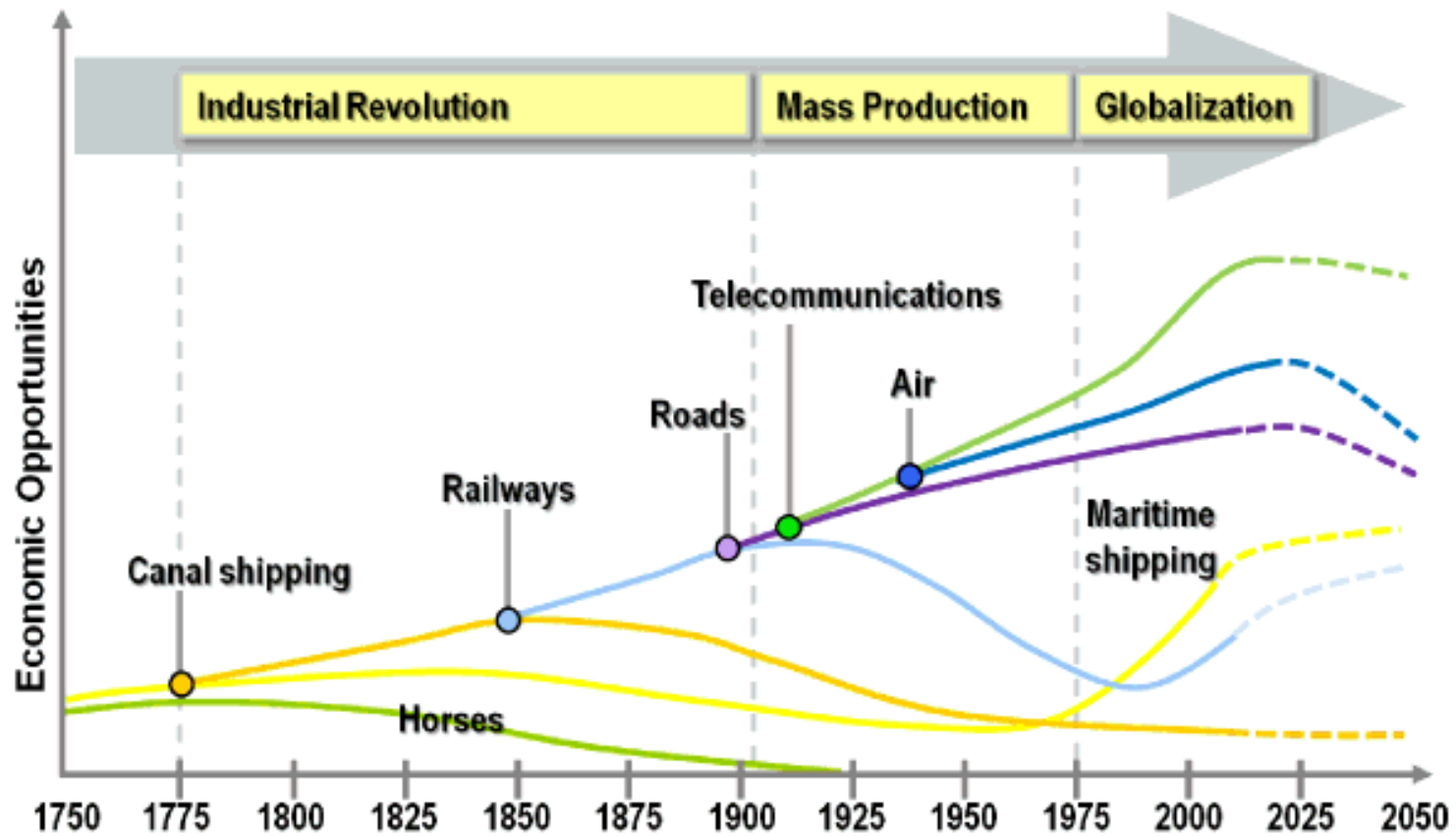


Major Metros Contain the Fundamental Drivers of Prosperity: 65 Percent of the Nation's Population and 75 Percent of the U.S. GDP

Percentage of National Activity in 100 Largest Metro Areas, Various Indicators, 2005



Cumulative Modal Contribution to Economic Opportunities



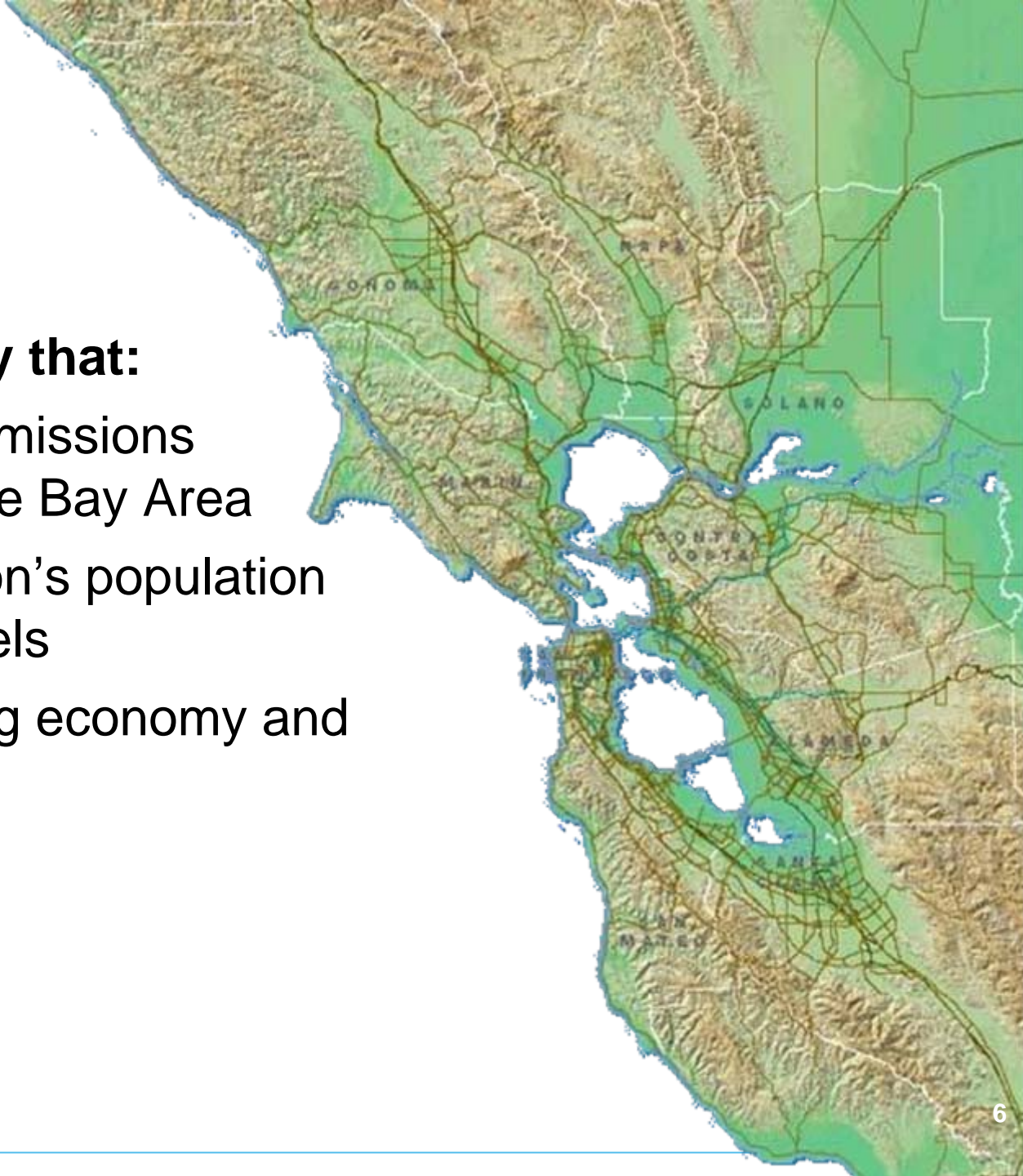
Source: adapted from HOP Associates (2005) "Time, mobility and economic growth"

SB 375



The Three E's

Develop a strategy that:

- Reduces GHG emissions from driving in the Bay Area
- Houses the region's population at all income levels
- Supports a strong economy and quality of life



San Francisco International Airport

-  Sixteen Inch Sea Level Rise and
-  Fifty-five Inch Sea Level Rise



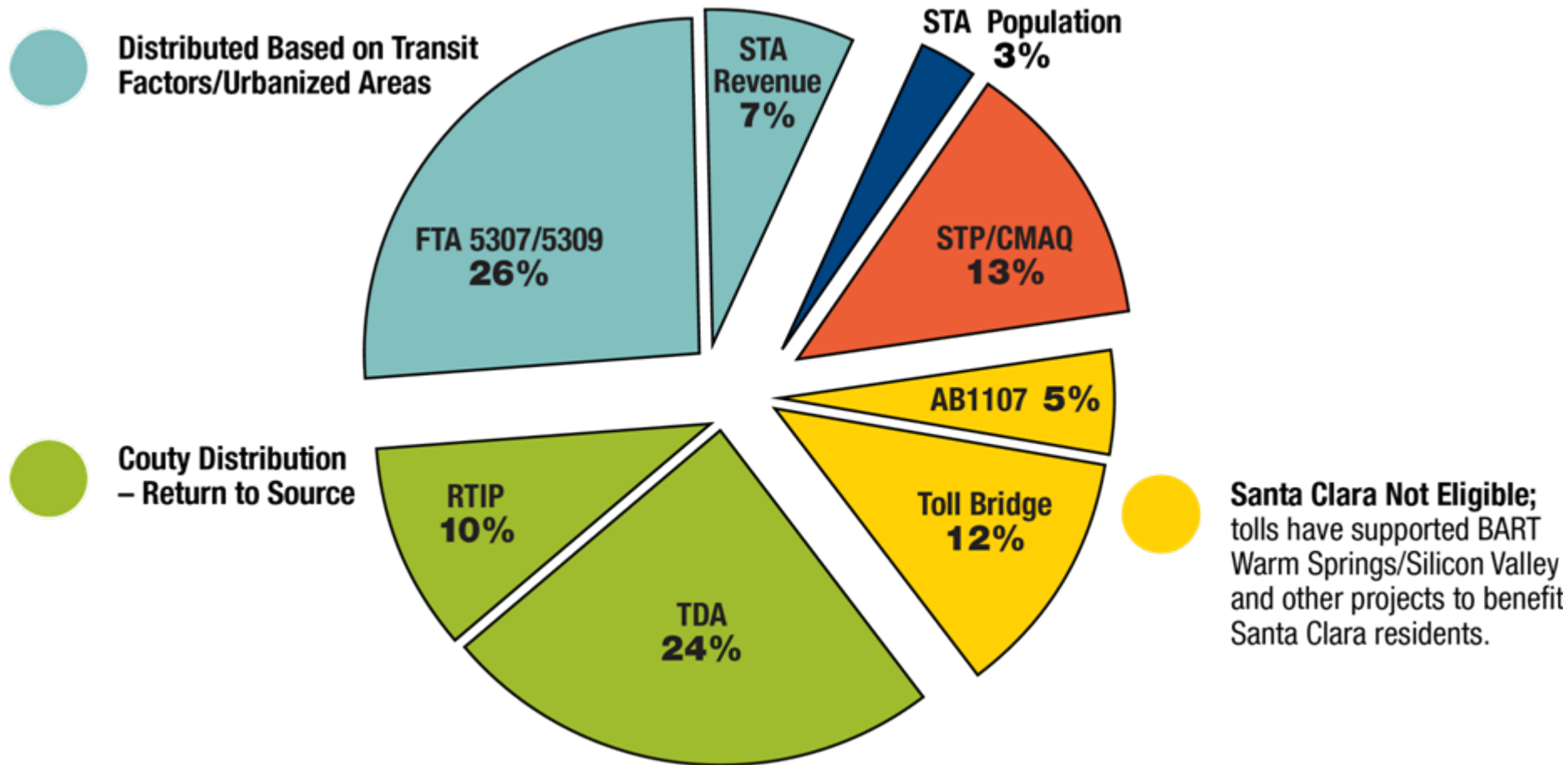
MTC & ABAG Partner to Advance Regional Prosperity & Economic Opportunity



- **MTC and ABAG were recently awarded \$5 million from the U.S. Housing and Urban Development Department to fund development of a Regional Prosperity Plan — composed of a regional Economic Opportunity Strategy and a Housing the Workforce Strategy**
- **The Sustainable Communities Grant proposal was developed in partnership with 20 cities and counties, as well as a dozen non-profit partners.**
- **The effort also will involve extensive outreach to ensure that low and moderate-income communities are fully engaged in the development of the plans.**

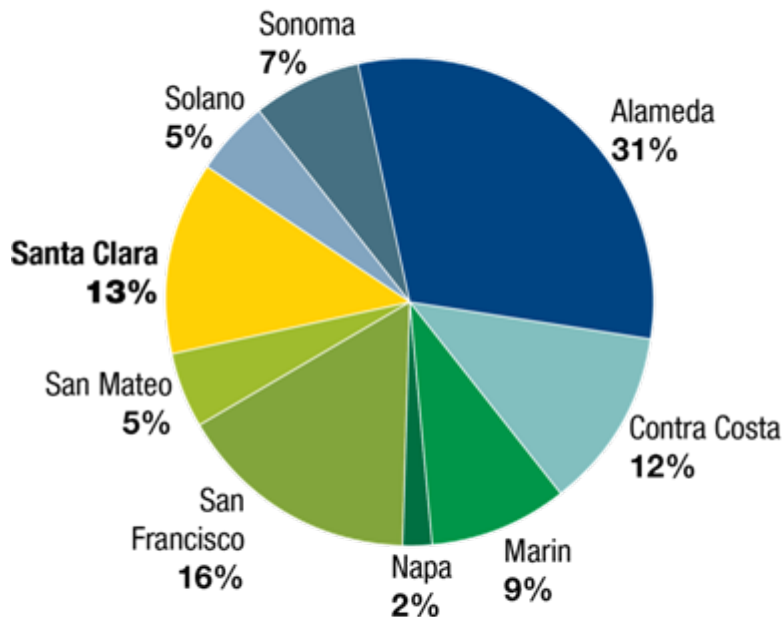
Appendix

Bay Area Primary Transportation Funding Sources: Distribution Details



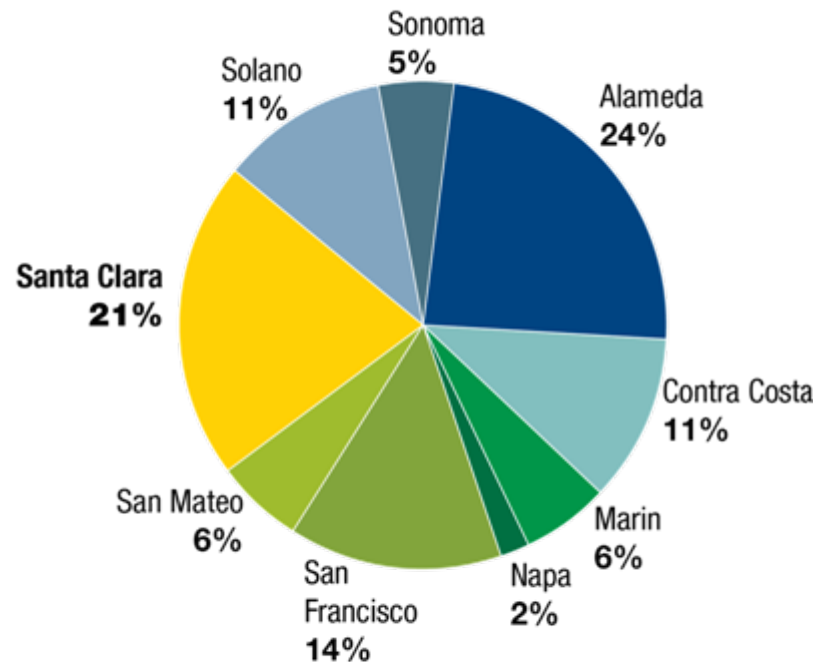
Federal STP/CMAQ: Santa Clara County's Share of the Total* is Increasing

SAFETEA (all cycles) – \$732 Million
Including regionally competitive programs



SAFETEA
Santa Clara – 13%

New Act (cycles 1 & 2) – \$855 Million
Including regionally competitive programs



New Act (cycles 1 & 2)
Santa Clara – 21%

* Does not include region-wide programs such as Clipper

ABAG and BCDC Commissioners on MTC

Commissioner	Term	Affiliation	Elected Official	Representing
John F. McInnis	1971-1972	ABAG	No	
Louise P. Giersch	1972-1978	ABAG	Yes	Mayor, Antioch
Dan McCorquodale	1979-1982	ABAG	Yes	Supervisor, Santa Clara County
Ralph C. Bolin	1982-1987	ABAG	Yes	City Council, Napa
				Mayor, Napa
Diane McKenna	1987-1997	ABAG	Yes	Supervisor, Santa Clara County
Charlotte Powers	1997-2001	ABAG	Yes	City Council, San Jose
Pam Torliatt	2001-2007	ABAG	Yes	City Council, Petaluma
				Mayor, Petaluma
Dave Cortese	2007-2010	ABAG	Yes	City Council, San Jose
				Supervisor, Santa Clara County
Mark Green	2010-Present	ABAG	Yes	Mayor, Union City
E. Jack Schoop	1971-1972	BCDC	No	
Melville Owen	1972-1973	BCDC	No	
Joseph P. Houghteling	1973-1983	BCDC	No	
Earl P. Mills	1983-1986	BCDC	No	
Angelo Siracusa	1986-2001	BCDC	No	
Barbara Kaufman	2001-2004	BCDC	Yes	Supervisor, San Francisco County
Anne Halsted	2004-Present	BCDC	No	