

Leveraging **Vision Zero & Black Lives Matter** to Develop **Outcomes-Based Performance Measures** and Achieve **Safety & Equity Goals**

#VisionZero #BlackLivesMatter

#WalkBikePlaces

Amanda Leahy, AICP | Senior Planner | Kittelson & Associates, Inc.

pro walk pro bike pro place





Vision Zero Supporter

Image Credit: Yana Paskova / New York Times: https://www.nytimes.com/2016/01/02/us-region/number-of-traffic-deaths-in-new-york-falls-for-a-second-year-in-a-row.html?_r=0



Black Lives Matter Ally

Image Credit: Alan Tan / Reuters. http://www.huffingtonpost.com/entry/16-photos-of-white-allies-joining-alongside-black-lives-matter_us_5783b10be4b0c5907ad2ed0

SKY 7 HD



Waking Up

Image Credits: Amanda Leahy, BlackLivesMatter.com <http://blacklivesmatter.com/macklemores-white-privilege-and-the-role-of-white-allies/>

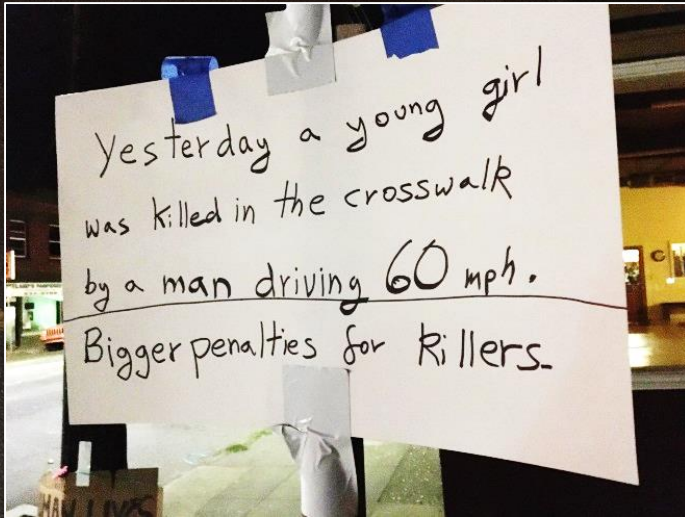


Image Credit: Twitter, @BikePortland, 8/20/16.

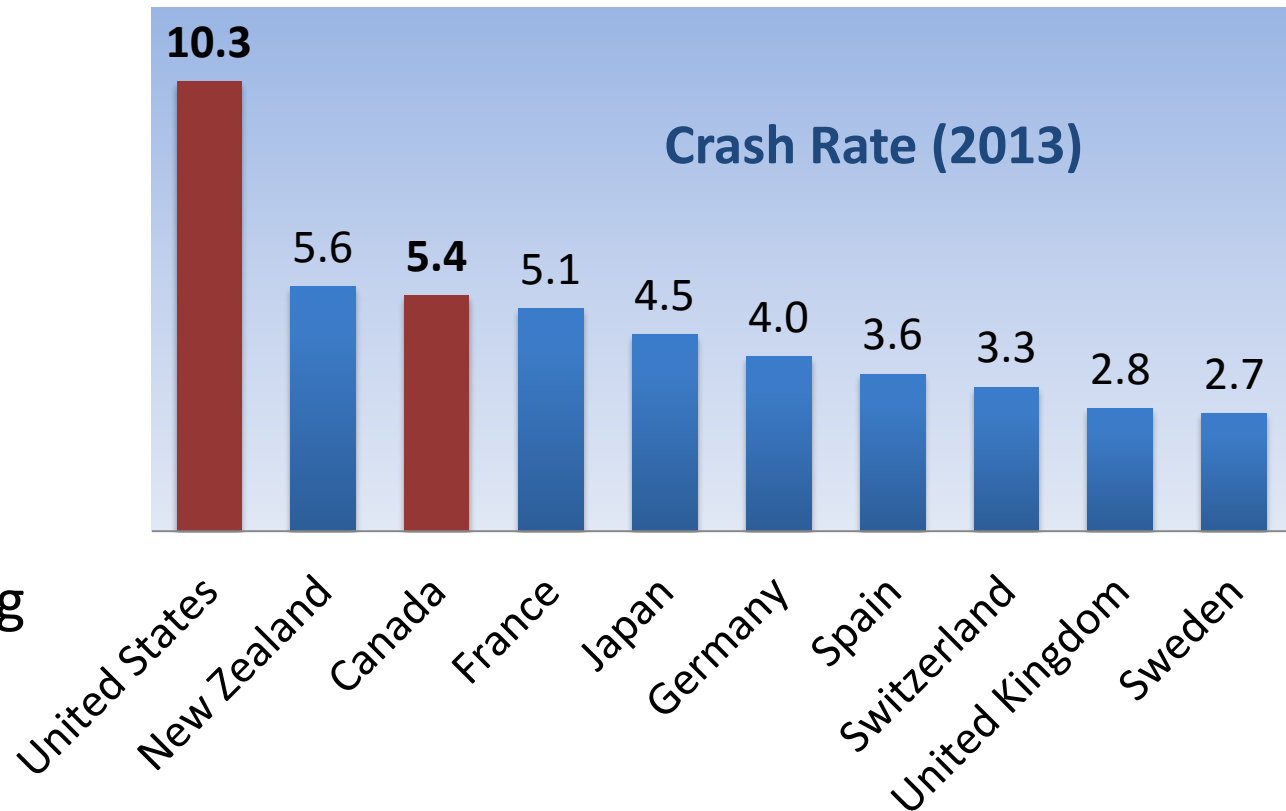
Traffic Fatalities in the U.S.

90 deaths per day

>32,000 per year

31% due to alcohol

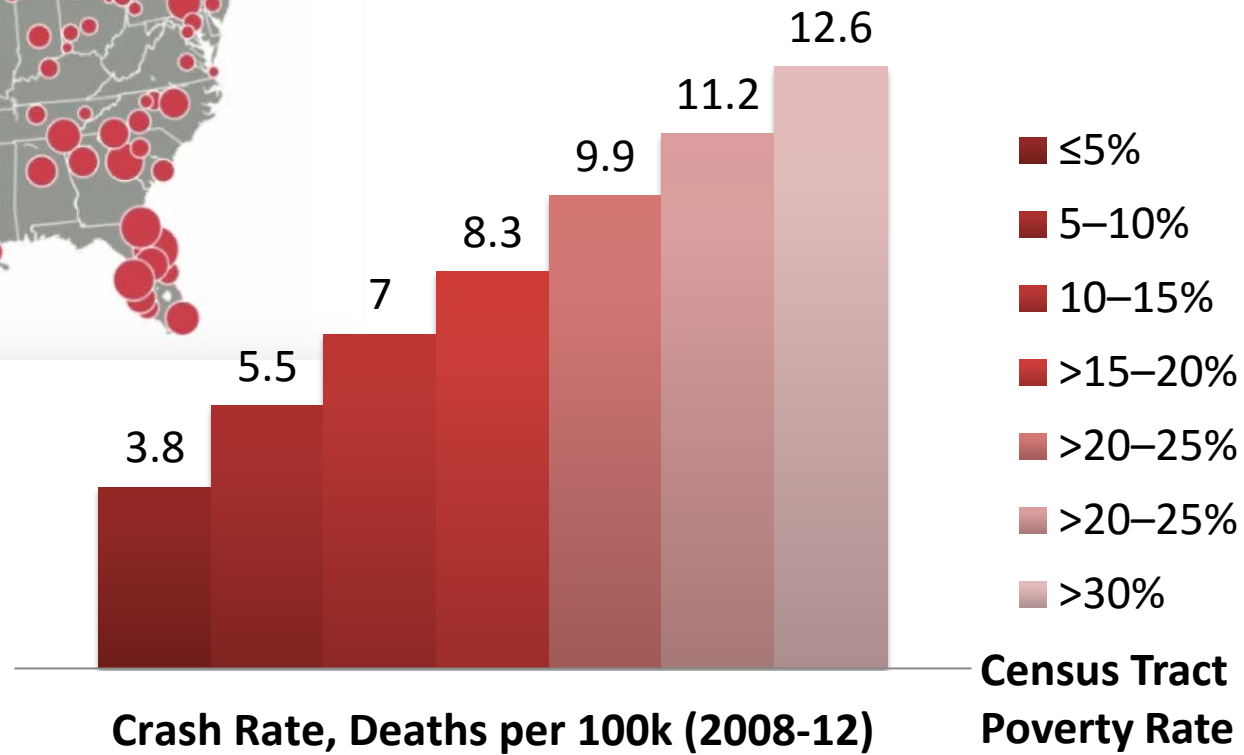
29% due to speeding



Source: Center for Disease Control, Vital Signs, Motor Vehicle Injury Prevention, July 2016

*“Traffic deaths +9% with 1.6 trillion miles driven
... 19k lives and counting”*

– Janette Sadik Khan, Principal with Bloomberg Associates



“Vision Zero is about saving lives and protecting the most vulnerable people in our communities.”

– Yvette Fang, *San Francisco* resident

and disability community advocate

Components of Commitment



1. Political Commitment
2. Multi-Disciplinary Leadership
3. Action Plan
- 4. Equity**
5. Cooperation & Collaboration
6. Systems Based Approach
7. Data-Driven
8. Community Engagement
9. Transparency

EQUITY

City stakeholders commit to both an equitable approach to Vision Zero by establishing inclusive and representative processes, as well as equitable outcomes by ensuring measurable benchmarks to provide safe transportation options for all road users in all parts of the city.



pro walk pro bike pro place

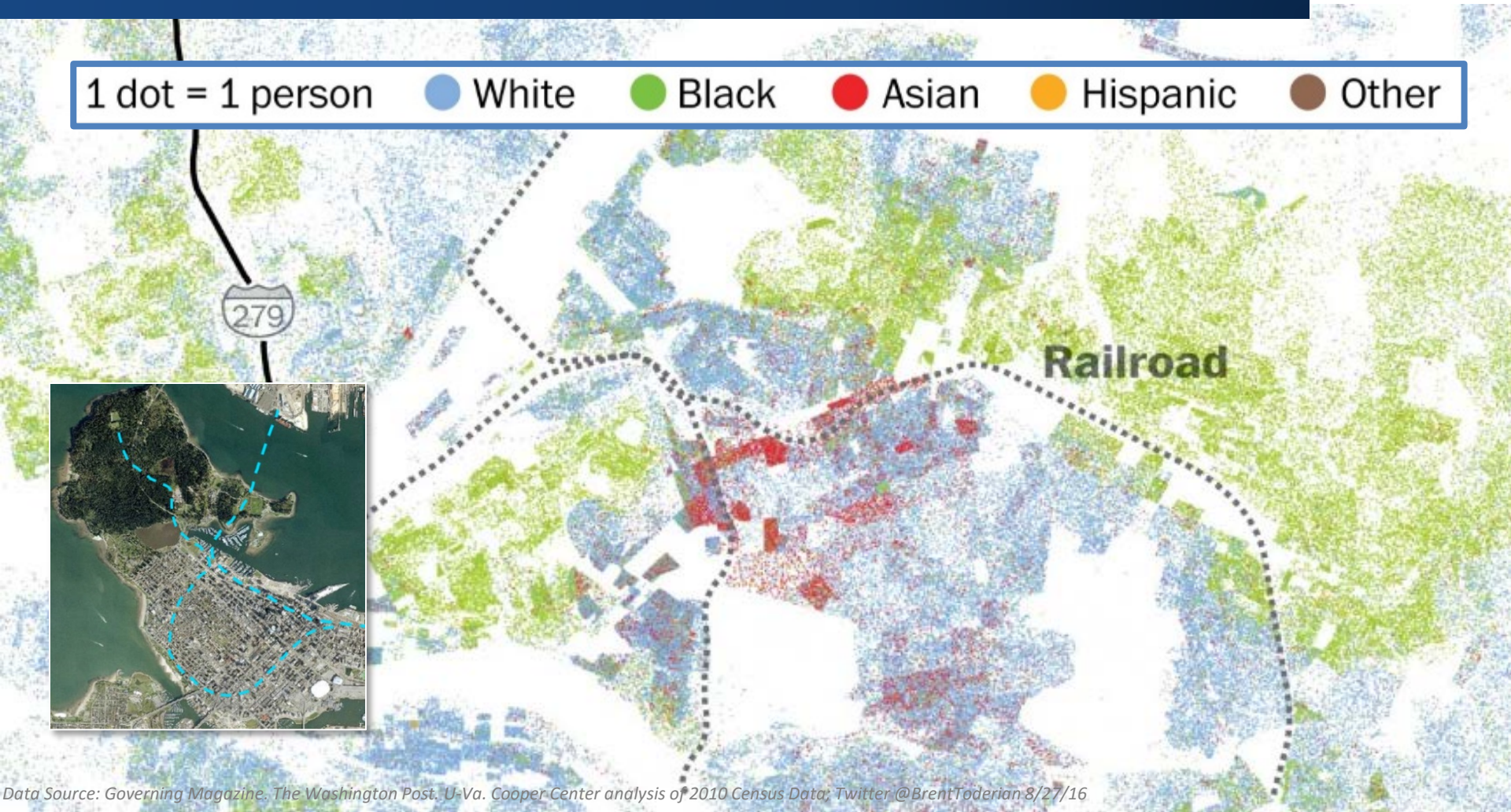


Black Lives Matter



“Transportation, has long been central to the black civil rights movement, with the Selma march, the Freedom Rides, and Rosa Parks' appeal to equal rights on public buses.”

- Emily Badger, Washington Post Wonkblog



“Driving While Black”

20% zero vehicle HH

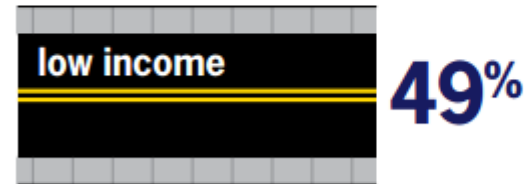
+73% crash fatality rate

-50% motorist yield rate

2-3x more traffic stops

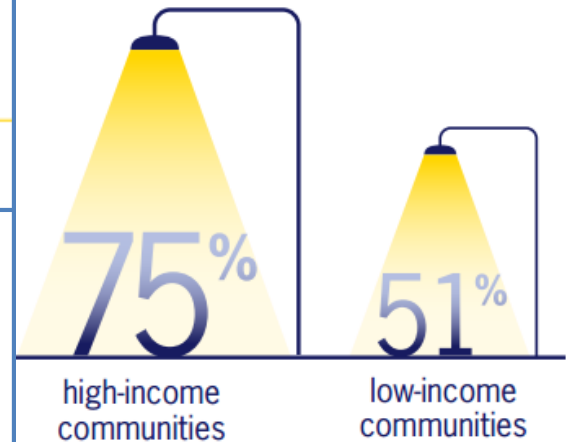
↑ transportation cost burden

Communities with Sidewalks



Bridging the Gap, Income Disparities in Street Features that Encourage Walking, 2012

Who Has Streets with Lighting?



Bridging the Gap, Income Disparities in Street Features that Encourage Walking, 2012

pro walk pro bike pro place



Campaign Zero

WE CAN LIVE IN A WORLD WHERE THE POLICE DON'T KILL PEOPLE
BY LIMITING POLICE INTERVENTIONS, IMPROVING COMMUNITY INTERACTIONS
AND ENSURING ACCOUNTABILITY.

1 END BROKEN
WINDOWS POLICING



2 COMMUNITY
OVERSIGHT



3 LIMIT USE OF FORCE



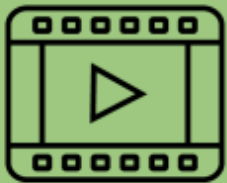
4 INDEPENDENTLY
INVESTIGATE & PROSECUTE



5 COMMUNITY
REPRESENTATION



6 BODY CAMS /
FILM THE POLICE



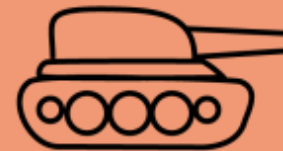
7 TRAINING



8 END FOR-PROFIT
POLICING



9 DEMILITARIZATION



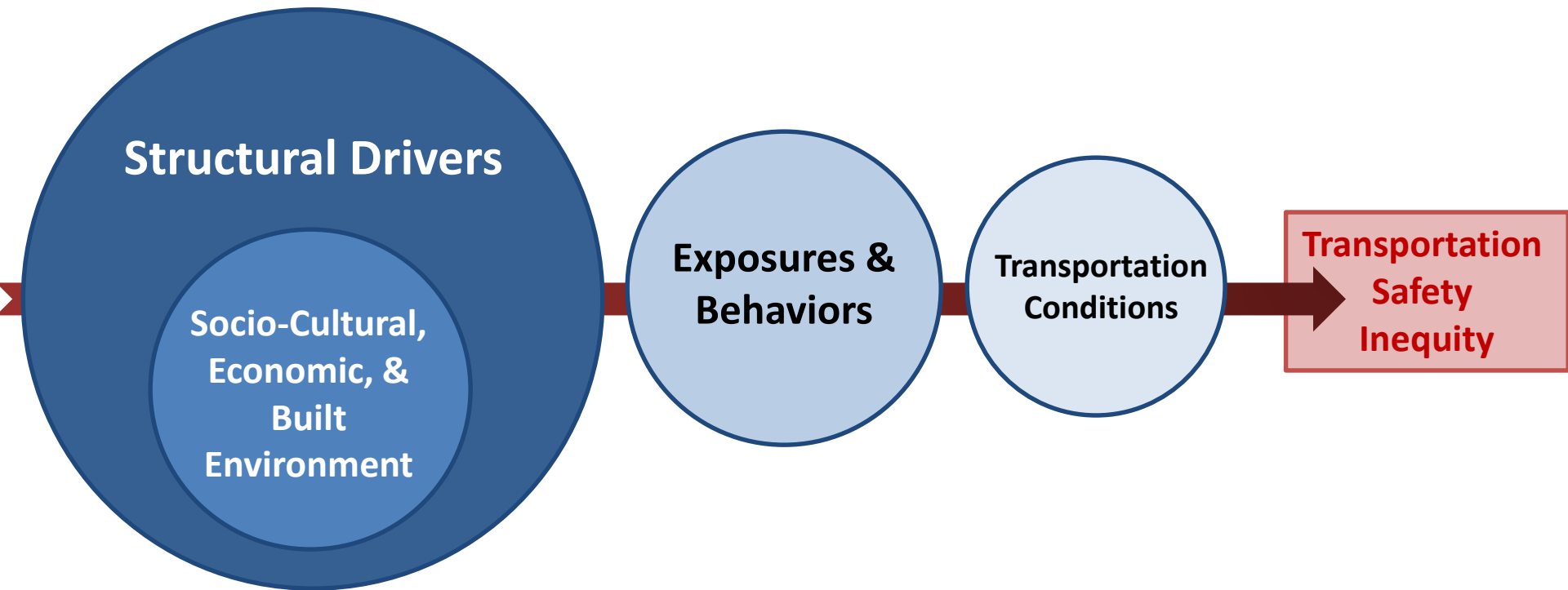
10 FAIR POLICE
UNION CONTRACTS



WE CAN LIVE IN A WORLD WHERE SYSTEMS AND STRUCTURES DO GOOD, NOT HARM.

JOINCAMPAINZERO.ORG

Trajectory of Safety Inequity

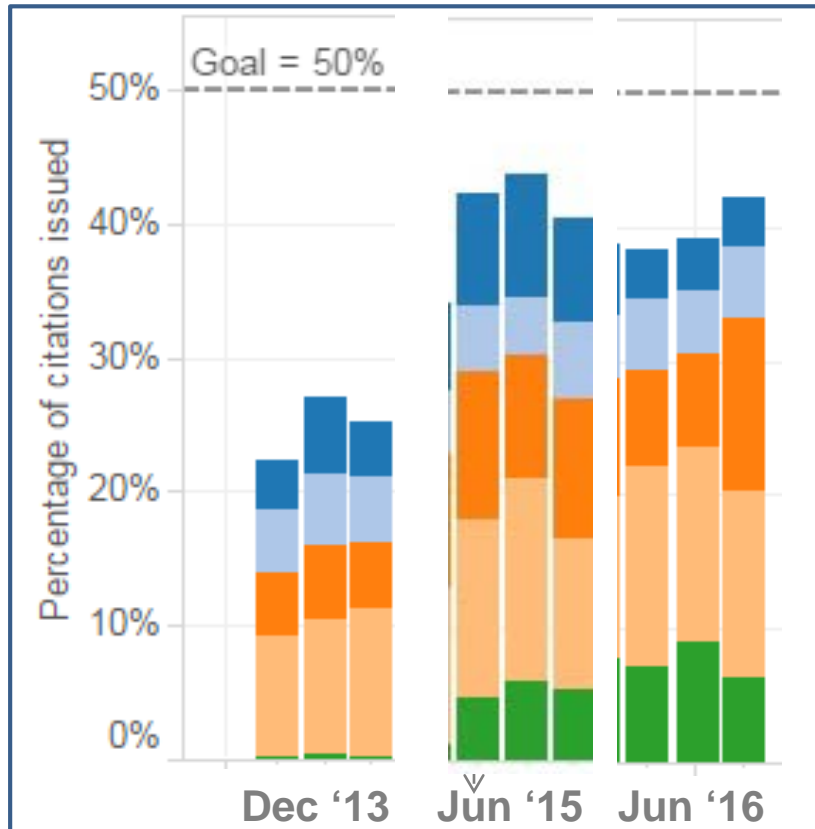


pro walk pro bike pro place



Measuring Transportation Safety Equity

SFPD % “Focus on the Five” Citations



Source: SFGov Scorecards: <http://sfgov.org/scorecards/percentage-citations-top-five-causes-collisions>

SAFE SPEEDS CAMPAIGN

- Total Enforcement = 132 hours week
 - 60 hours a week of High Visibility Enforcement Events
 - 72 hours a week additional citywide enforcement
- Paired with Enhanced Education and Media

- Ped Right of Way
- Red Light
- Speeding
- Stop Sign
- Yield While Turning

“...Vision Zero can also be a threat to a more equitable society.”

- Leah Shahum, Founder of the Vision Zero Network

Outcomes-Based Measures

| Outcome | Measure |
|--|---|
| Eliminate racial disparity in fatal/injury crashes | <ul style="list-style-type: none">• Crash rate & risk |
| Equitable transportation investment | <ul style="list-style-type: none">• Per capita investment |

pro walk pro bike *pro place*



Outcomes-Based Measures

| Outcome | Measure |
|---|---|
| Increase relative destination accessibility | <ul style="list-style-type: none">• Jobs-access by mode• Transit access• Ped/bike network connectivity• Mode choice |
| Prevent gentrification & displacement | <ul style="list-style-type: none">• (H+T[®]) Housing + Transportation Affordability Index• Location Affordability Index (LAI) |

pro walk pro bike *pro place*



Outcomes-Based Measures

| Outcome | Measure |
|-----------------------|---|
| Equitable enforcement | <ul style="list-style-type: none">• Representative of community• Enforcement priorities• Use of force policies• Body camera implementation |

pro walk pro bike *pro place*



Mainstreaming Safety & Equity



NYPD 33rd Precinct
@NYPD33Pct



Follow

33 Pct NCO members out in full force spreading the message of pedestrian safety. #VisionZero #HeadsUp #rolemodel



“We can’t work on Vision Zero without prioritizing the intersection between the transportation justice movement and the social and environmental justice movements.”

- Noel Mickelberry, Executive Director of Oregon Walks
Portland, OR Vision Zero Task Force member



RETWEETS 15
LIKES 50

Achieving Safety & Equity Goals

Spectrum of Prevention



pro walk pro bike *pro place*



#VisionZero #BlackLivesMatter
#WalkBikePlaces

Thank You

Amanda Leahy, AICP | aleahy@kittelerson.com |  @_amandaleahy

pro walk pro bike *pro place*

